

NIHR CLAHRC Greater Manchester

Sarah Cotterill
Sarah Rhodes
Eva Batistatou
Nia Coupe

Centre for Biostatistics Showcase – 3 May 2017



- Organising Support for **CAR**ers of **Stroke Survivors**
- Cluster randomised controlled trial (RCT)
- Partnership Between CLAHRC GM and Stroke Association

- Statistician - Sarah Rhodes:
 - Design of cluster RCT
 - Trial Management
 - CLAHRC Workshop on design of implementation research



Wound Audit

- Audit of prevalence of complex wounds and their treatment
- Partnership between GM CLAHRC and 5 NHS Primary Care Trusts
- Statistician - Sarah Rhodes:
 - Analysis of large data set
 - Dissemination to NHS Trusts
 - Paper on 'Better Value Wound Care'
 - Using results to plan future work



End of Life: Carer Survey

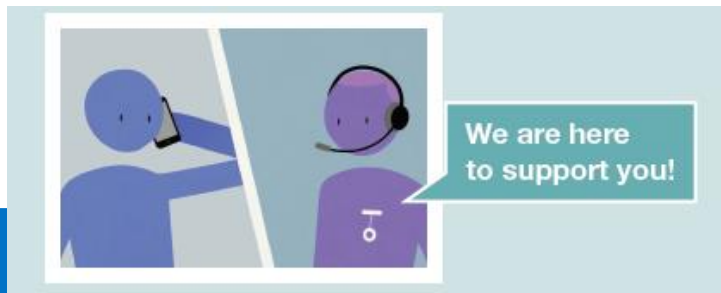
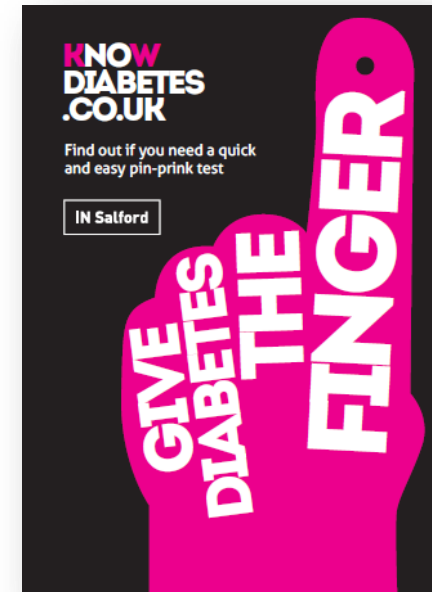
- The contributions of family care-giving at end of life: A national post-bereavement census survey of cancer carers
- Partnership between CLAHRC GM and Dimbleby Cancer Care
- Statistician – Eva Batistatou
 - Analysis of the census survey of cancer carers
 - Dissemination of results
 - Plan of future work



making life better for people living with cancer

Type 2 Diabetes Prevention

- Evaluation of NHS Diabetes Prevention Programme – Salford pathfinder.
- Partnership between CLAHRC GM and Salford health trusts, local authority and voluntary sector. Funded by Public Health England.
- Mixed methods study: literature review, analysis of routine data and qualitative interviews.
- Principal Investigator – Sarah Cotterill



The Active Lifestyles Team

Diabetic neuropathy screening



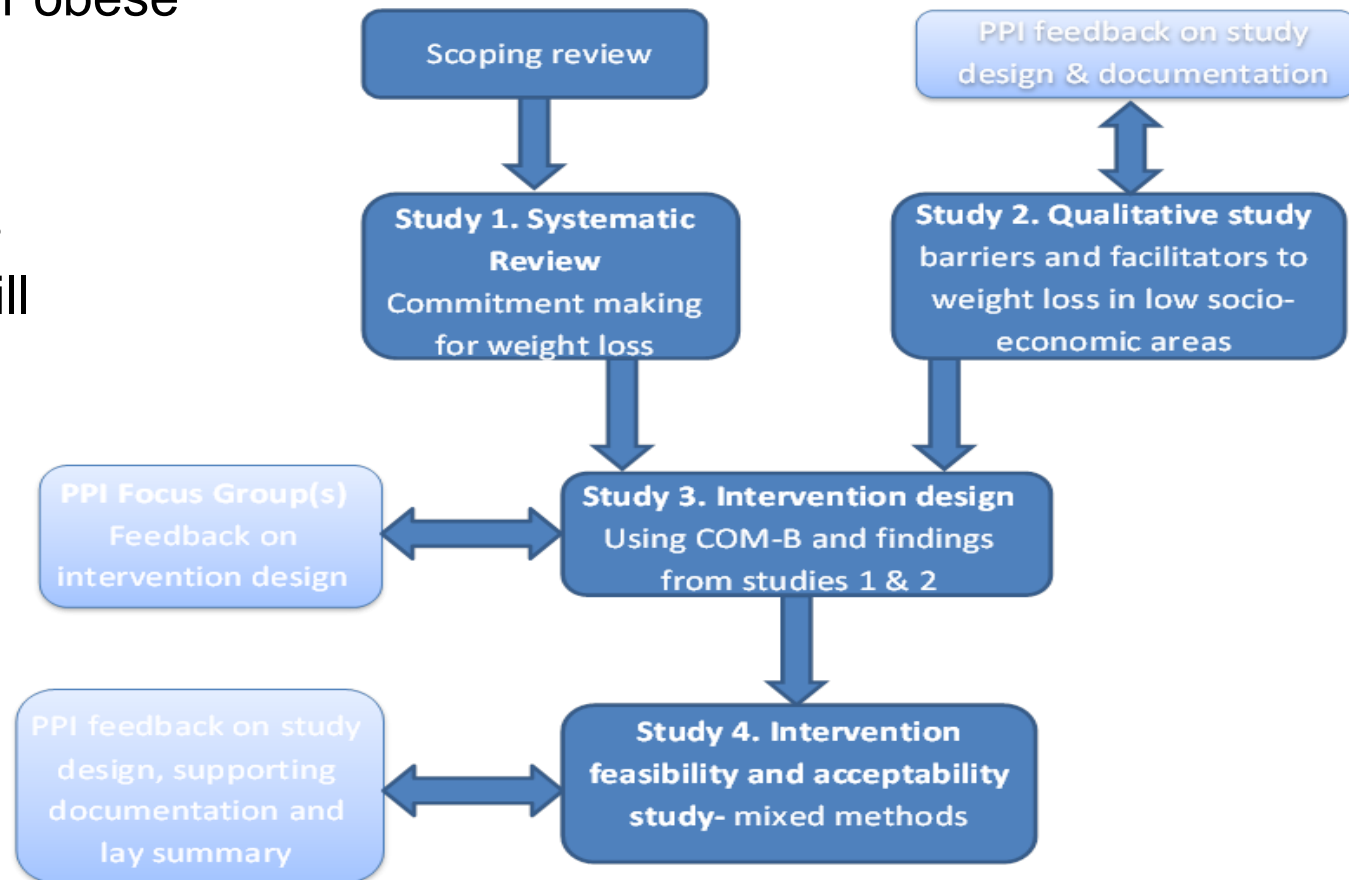
National Institute for
Health Research

- Corneal confocal microscopy (CCM) for screening and early assessment of diabetic neuropathy
- Partnership between CLAHRC GM and Heidelberg Engineering.
- Feasibility study in 4 opticians (400 patients)
- Statistician – Sarah Cotterill
 - Research design
 - Project management team
 - Contribution to analysis
 - Reports, papers



CLAHRC PhD: Nia Coupe

- SMART-C: commitments to promote behaviour change in people who are overweight or obese
- Supervisors
 - Sarah Peters
 - Sarah Cotterill



The logo for TIDieR, featuring the word 'TIDieR' in a bold, blue, sans-serif font. The letter 'I' is stylized with three horizontal bars to its left.

Template for Intervention
Description and Replication

- ‘TIDieR or Messier? Exploring the utility of TIDieR beyond trials’
- TIDieR template used in 6 CLAHRC GM projects
- Findings:
 - We found the TIDieR tool to be a useful tool for applied research outside the context of clinical trials and we have identified four amendments to enhance its utility
- Authors: Sarah Cotterill, Sarah Knowles, Anne-Marie Martindale, Rebecca Elvey, Nia Coupe, Susan Howard, Paul Wilson, Michael Spence.

Project reports and papers:

<http://clahrc-gm.nihr.ac.uk/our-work/>